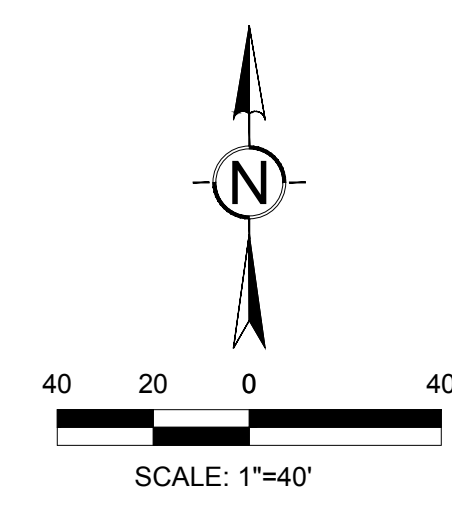
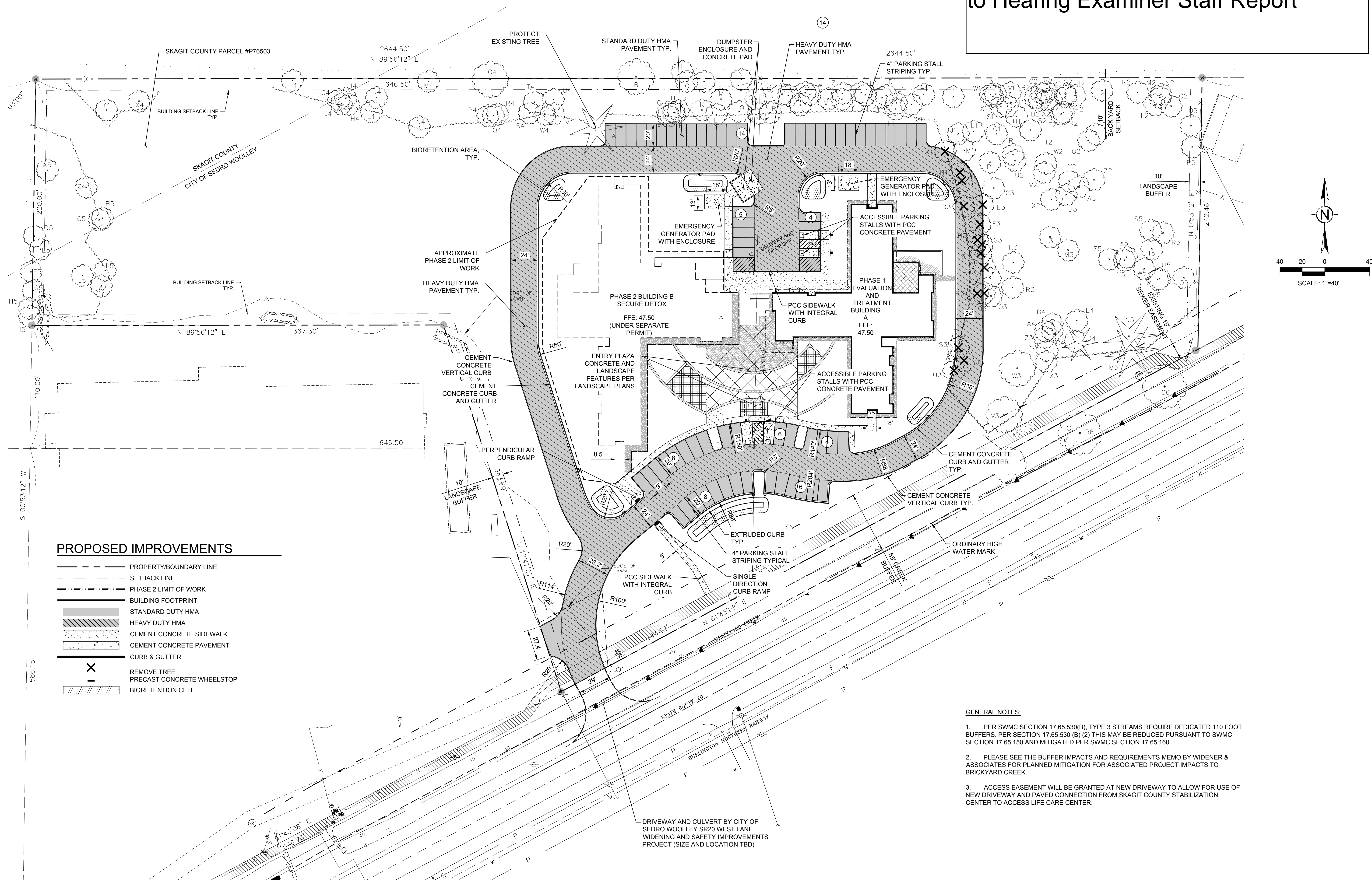


Exhibit L

to Hearing Examiner Staff Report



PROPOSED IMPROVEMENTS

- PROPERTY/BOUNDARY LINE
- SETBACK LINE
- PHASE 2 LIMIT OF WORK
- BUILDING FOOTPRINT
- STANDARD DUTY HMA
- HEAVY DUTY HMA
- CEMENT CONCRETE SIDEWALK
- CEMENT CONCRETE PAVEMENT
- CURB & GUTTER
- REMOVE TREE
- PRECAST CONCRETE WHEELSTOP
- BIORETENTION CELL

- GENERAL NOTES:**
- PER SWMC SECTION 17.65.530(B), TYPE 3 STREAMS REQUIRE DEDICATED 110 FOOT BUFFERS. PER SECTION 17.65.530 (B) (2) THIS MAY BE REDUCED PURSUANT TO SWMC SECTION 17.65.150 AND MITIGATED PER SWMC SECTION 17.65.160.
 - PLEASE SEE THE BUFFER IMPACTS AND REQUIREMENTS MEMO BY WIDENER & ASSOCIATES FOR PLANNED MITIGATION FOR ASSOCIATED PROJECT IMPACTS TO BRICKYARD CREEK.
 - ACCESS EASEMENT WILL BE GRANTED AT NEW DRIVEWAY TO ALLOW FOR USE OF NEW DRIVEWAY AND PAVED CONNECTION FROM SKAGIT COUNTY STABILIZATION CENTER TO ACCESS LIFE CARE CENTER.

DATE PLOTTED: 09/20/20 4:44:56 PM FILENAME: I:\17179\101_01_CUP.DWG BY: ---



T: 253.627.4387 F: 253.627.4395 WWW.BCRADesign.COM
2108 PACIFIC AVENUE, SUITE 300, TACOMA, WA 98402

PROJECT:
 NEW CONSTRUCTION
SKAGIT COUNTY STABILIZATION CAMPUS
 SEDRO-WOOLLEY, WA 98284

REVISIONS

NO.	DATE	DESCRIPTION

DATE: 2.12.2020
 BCRA NO: 17179
 DRAWN BY: RJB DESIGNED BY: BH / RB
 REVIEWED BY: ZMC
 SHEET TITLE: SITE PLAN



C-101
© COPYRIGHT 2019 - BCRA, INC. ALL RIGHTS RESERVED
 SHEET

IF SHEET MEASURES LESS THAN 24"X36", IT IS A REDUCED PRINT. REDUCE SCALE ACCORDINGLY